



MONTHLY MEMBERSHIP PROGRESS REPORT

District 26 M4

Results as of: 03/31/2018

GMT: JOE AL PICONE

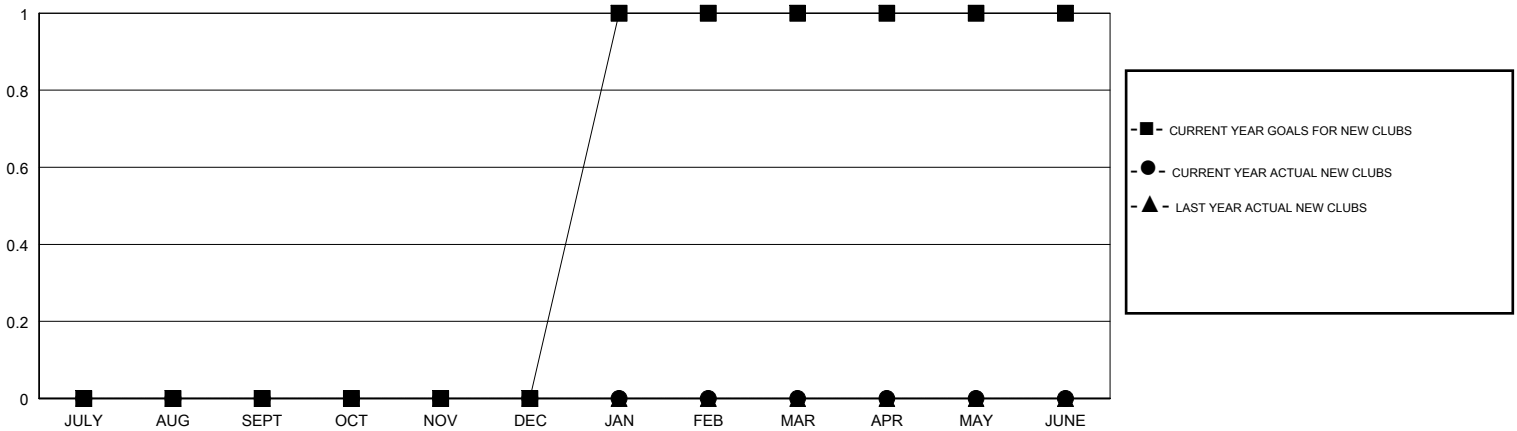
LOCATION MISSOURI

GMT CA

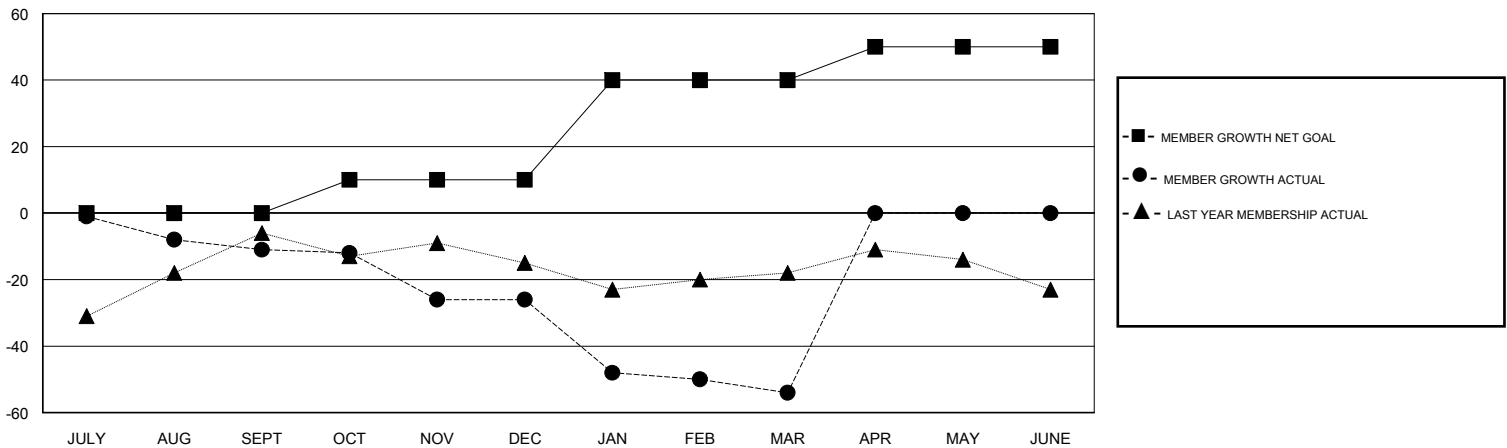
Clubs			
RESULTS FOR 2017-2018			
QUARTER	NEW CLUB GOAL	NEW CLUBS	DROPPED CLUBS
JULY/AUG/SEPT	0	0	0
OCT/NOV/DEC	0	0	0
JAN/FEB/MAR	1	0	0
APR/MAY/JUNE	0	0	0

Members			
RESULTS FOR 2017-2018			
QUARTER	MEMBER GROWTH NET GOAL	MEMBER GROWTH ACTUAL	DROPPED MEMBERS ACTUAL (including transfers)
JULY/AUG/SEPT	0	28	35
OCT/NOV/DEC	10	27	40
JAN/FEB/MAR	30	25	48
APR/MAY/JUNE	10	0	0

GOALS AND ACTUAL NEW CLUBS CUMULATIVE



GOALS AND ACTUAL MEMBERS CUMULATIVE



DROPPED CLUBS: 0	29 CLUBS OF 58 ADDED 1 OR MORE NEW MEMBERS	<u>GENDER DISTRIBUTION</u>	
		MALE	962 (75.33%)
		FEMALE	315 (24.67%)
		Women Percentage Fiscal Year Goal: 24%	
<u>DROPPED MEMBERS</u>		TOTAL FAMILY UNIT MEMBERS	218
DECEASED	12	FAMILY MEMBERS PAYING HALF DUES	111
CLUB CANCELLED	0		
OTHER	111		
TOTAL	123		

[CLICK HERE FOR CUMULATIVE MEMBERSHIP DATA](#)